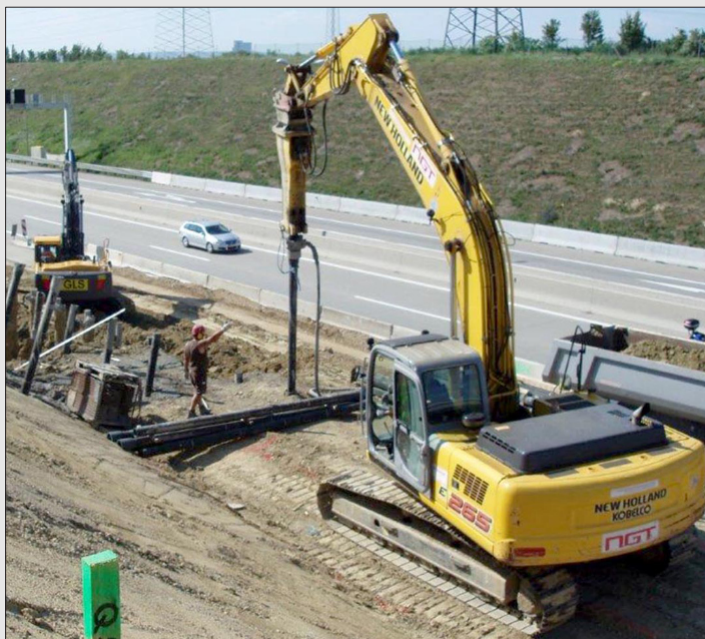


DUCTILE IRON PILES

Because every driven pile is a tested pile



DESCRIPTION

Ductile iron piles are made of cast iron GJS 450-1 in sections of 5.0 or 5.65 m net length (for container loading) and driven into the soil by an excavator with suitable hydraulic hammer. Non-grouted end bearing piles are mainly for projects with a solid stratum while grouted piles are used where skin friction can be activated.

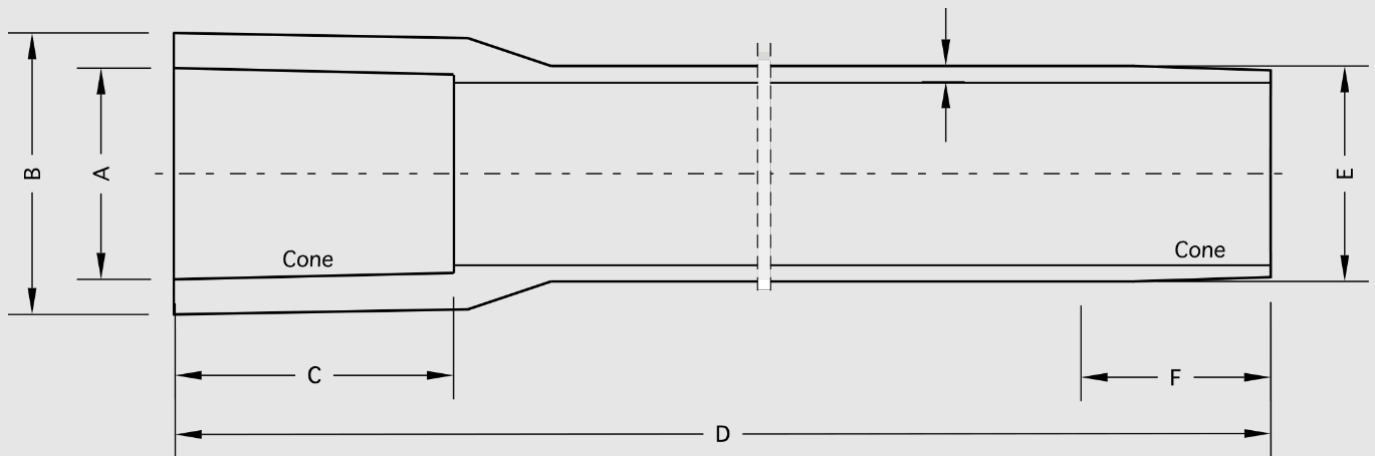
We offer the complete system including pile driving shoes for grouted and non-grouted piles as well as pile connectors and driving adapters to connect the pile top to the hydraulic hammer and grouting boxes.

APPLICATIONS

- Foundation of buildings
- Foundation of prefabricated structures
- Bridge construction
- Slope stabilisation
- Uplift protection
- Underpinning foundations
- Tall structures (silos, transmission towers, etc)
- Retaining walls

DIMENSIONS, TOLERANCES & ADVANTAGES

Type	Outer diameter mm	Wall thickness mm	Weight kg/m	Internal load bearing capacity kN	Load bearing capacity with concrete C20/25 kN
118/7.5	118	7.5	21.00	833	944
118/9.0	118	9.0	24.4	986	1091
118/10.6	118	10.6	28.0	1144	1243
170/7.5	170	7.5	33.8	1225	1477
170/9.0	170	9.0	37.1	1457	1699
170/10.6	170	10.6	42.5	1699	1930
170/13.0	170	13.0	50.4	2052	2269



Section	Dimensions	Unit	Type 98		Type 118		Type 170	
			Size	Tolerance	Size	Tolerance	Size	Tolerance
Pile tube	Outer \varnothing E	mm	98	+1.5/-1.0	118	+1.5/-1.0	170	+2.5/-1.0
	Length D	m	5-6	+/-100	5-6	+/-100	5-6	+/-100
Pile shaft	Wall S	mm	6.0	-0.8	7.6	-0.8	9.0	-0.8
			7.5	-0.8	9.0	-0.8	9.0	-0.8
					10.6	-0.8	10.6	-0.8
							13.0	-0.8
	Straightness	mm	According to EN545:2011 section 4.2.4 < 0.125% of pile pipe length					
Socket	Inner \varnothing	mm	104	+2.0/-1.0	118.5	+2.0/-1.0	171.5	+2.0/-1.0
	Outer \varnothing	mm	132	+/-1.6	<162		<220	
Conus	Conus length C	mm	125	+/-3.0	155	+/-3.0	215	+/-3.0
	Conus	mm	1:8 to 1:18		1:10 to 1:18		1:12 to 1:18	
	Conus length F	mm	125		110	-20	150	-20
	Outer \varnothing E	mm	98	+1.5/-1.0	118	+1.5/-1.0	170	+2.5/-1.0

ADVANTAGES

- Ductile iron piles can be driven by standard hydraulic excavators of 25-35 tons operating weight.
- The spigot and socket connection is fast, reliable and does not need any welding.
- Therefore the pile length can be easily adjusted to meet different ground conditions and load requirements.
- Low vibration by the hydraulic hammer allows installation of piles close to existing structures.
- Due to high carbon and silicon content ductile iron piles have higher corrosion resistance than steel.
- Excellent driving performance make these piles a very economical foundation solution for many applications.



IMECO Handelsgesellschaft m.b.H.
 Arbesbachgasse 26/5 | 1190 Vienna | Austria
 Tel: +43.1.328 9980 | Email: imeco@imeco.at | Web: www.imeco.at