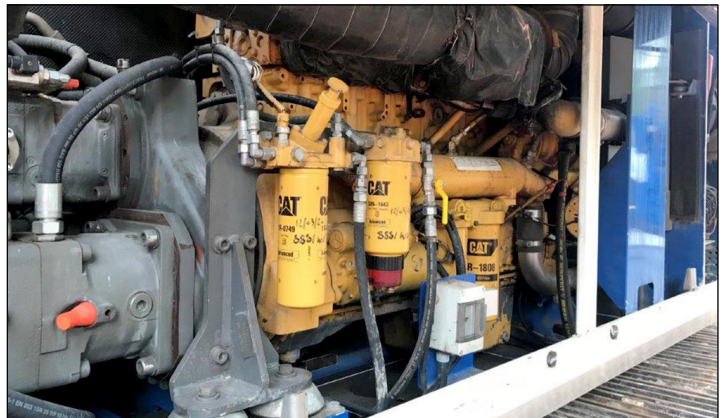
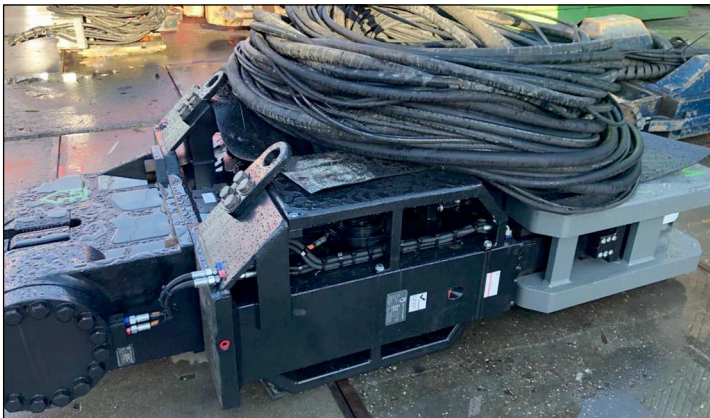


# PILING SPECIAL 1/2022

PERFECT MACHINES FOR DRIVING AND EXTRACTING  
SHEET PILES, BEAMS AND CASINGS



## Hydraulic vibrator PVE 24VM

Centrifugal force 1400 kN

Eccentric moment, variable 0-24 kgm

Operating weight with universal clamp ~6500 kg

Hydraulic power pack PVE 600 VM, YOM 1995

Cummins diesel engine with 507 kW

**Factory reconditioned 2021 with warranty**

## ABI Mobilram TM14/17V

Carrier Sennebogen SR35T

CAT diesel engine 470 kW

Hydraulic vibrator MRZV20V

Centrifugal force 1000 kN

Eccentric moment, variable 0-20 kgm

**YOM 2009, hours ~10800, very good condition**

PLEASE CHECK OUR WEBSITE FOR MORE DETAILS CONCERNING OUR ENGINEERING SERVICES  
AS WELL AS FOR OUR WIDE RANGE OF NEW AND USED MACHINES AND EQUIPMENT FOR  
INFRASTRUCTURE AND CIVIL ENGINEERING PROJECTS COVERING RETAINING STRUCTURES,  
PILING, DRILLING, FOUNDATION AND SOIL IMPROVEMENT WORKS.