



# PRODUCT LINE

SHORING  
PILING  
DRILLING  
FOUNDATION  
SOIL IMPROVEMENT  
EXCAVATOR ATTACHMENTS  
CONSULTING

# MACHINES, EQUIPMENT & EXPERTISE

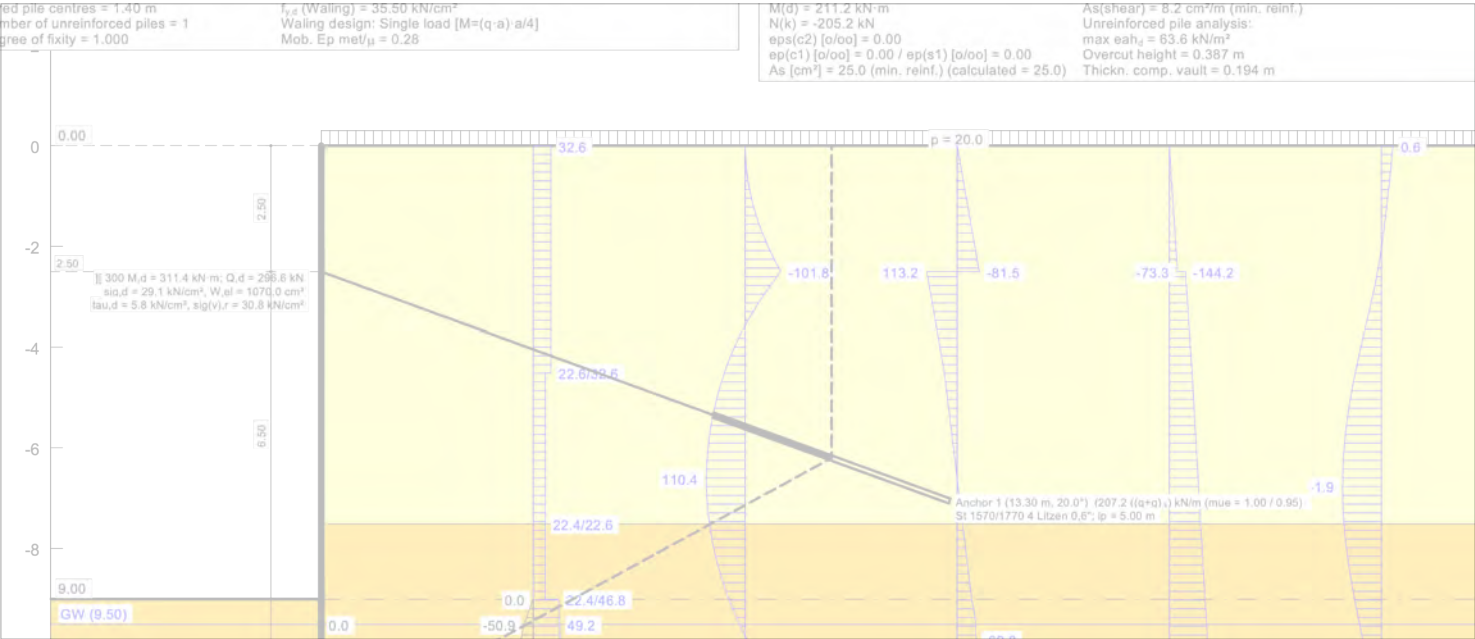
It is our strict company policy to provide material, equipment, machines and technical service only if we are convinced that our proposal represents technically the best and also the most economical solution for the specific project requirements.

All our offers and recommendations are based on more than 40 years international experience, the know-how of our business partners and actual world market prices. We meet our clients with an open heart, examine their needs carefully and aim to enter into a fruitful and long-term cooperation based on mutual trust and our technical competence.

We are also ambitious to meet and exceed international health, safety and environmental standards and to provide our clients with outstanding service throughout the complete project period.

We are very pleased and proud that infrastructure and civil engineering contractors from more than 50 countries make use of our expertise and service and we take this opportunity to thank all our customers for their trust, confidence and continuous support.

ANGELA PACIK  
General Manager  
angela@imeco.at





# SHORING

We offer a complete range of traditional and mechanised shoring systems for open-cut trenches and excavation supports for depths from 1 to 15 m, for every soil condition and even the most demanding project requirements. With more than 40 years experience we consider ourselves as experts in this field.

- Trench sheets (overlapping, cold rolled)
- Light sheet piles (interlocking, cold rolled)
- Heavy sheet piles (interlocking, hot rolled)
- PVC Sheet piles
- Trench struts, waling beams and manhole frames
- Trench boxes, mini, light and standard
- Single and double slide rail elements
- Soldier pile shoring
- Shaft, pit and chamber shoring
- Tie rods and anchors



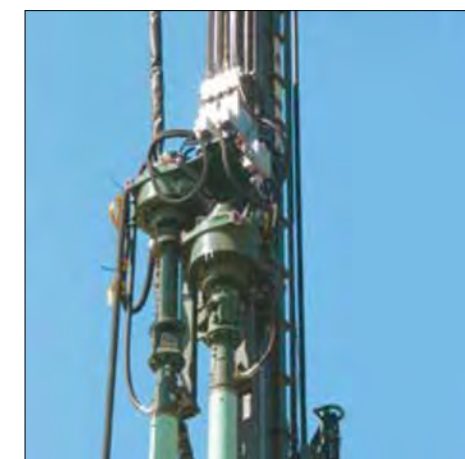




# PILING

Our piling machines and equipment are designed to drive and extract sheet piles, H-piles, steel pipe piles and precast concrete piles of any size with unmatched performance. We also supply piling materials as well as special equipment for soil improvement works.

- Crane suspended vibrators
- Diesel impact hammers (Delmag)
- Air impact hammers (Pajot)
- Hydraulic impact hammers
- Telescopic piling leaders (ABI)
- Hydraulic piling rigs
- Boom-mounted leaders
- Crane-based piling rigs
- Wick drain vibrators

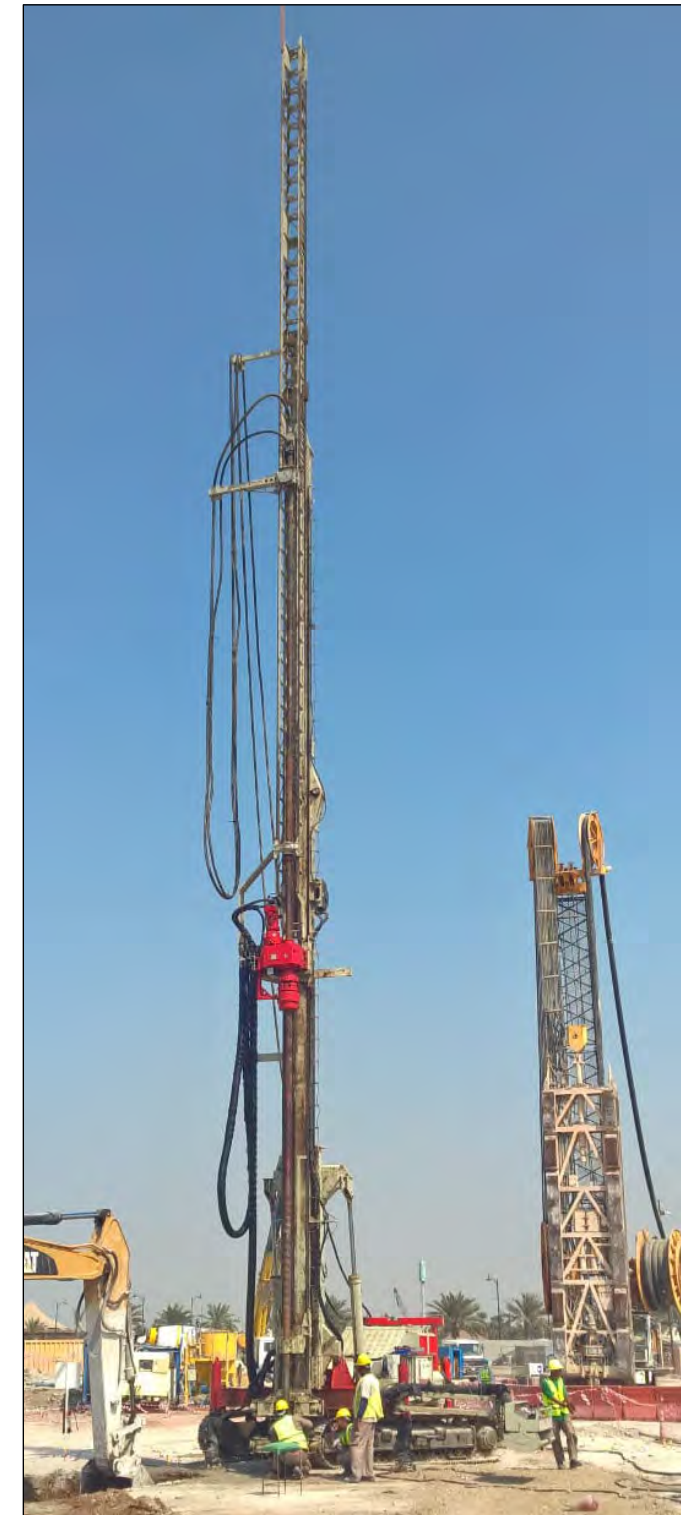




# DRILLING

Drilling (in our understanding) covers all vertical and inclined bores up to 400 mm diameter especially for anchors, micropiles, grouting, jet grouting and soil investigation. Our hydraulic drill rigs with different drilling systems and a wide range of tools are the perfect choice for many applications.

- Crawler drill rigs for anchors and micropiles
- Drill rigs for soil investigation
- Auger drives, drifters and double drill heads
- Drill rods, drill pipes and drilling tools
- Grout mixers, pumps and plants (Metax)
- Jet grouting equipment
- Strand and bar anchors
- Micropiles

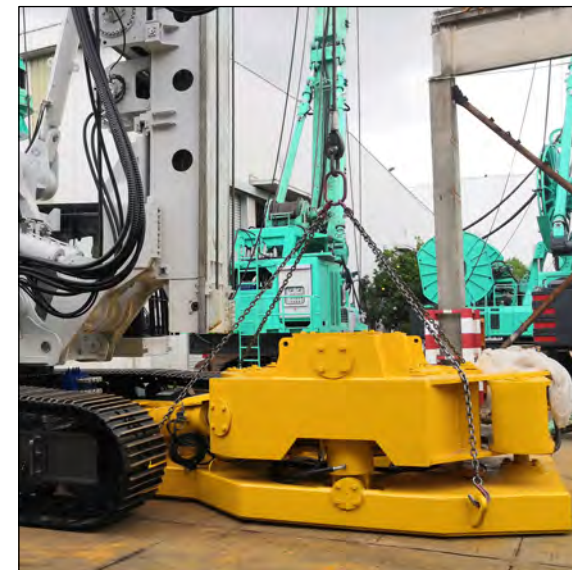




# FOUNDATION

Our foundation rigs and equipment make in-situ concrete bored piles with or without casings from 500-3000 mm diameter and up to 70 m depth. For diaphragm and secant pile walls special equipment is available to cover all projects requirements.

- Hydraulic foundation rigs (Delmag & HPM)
- Drilling tools (augers, buckets, core barrels)
- Friction and locking Kelly bars
- Hammer grabs for piles
- Grabs for diaphragm walls
- Hydraulic casing oscillators
- Casings and casing joints
- Bentonite processing equipment (mixers & desanders)





# ATTACHMENTS

You may be surprised what your excavator can do with dedicated, top quality attachments, mounted to the boom stick and connected to the hydraulic circuit of the base machine:

- Hydraulic auger drives for a wide range of drilling works.
- Hydraulic vibrators for driving and extracting sheet piles, H-piles and steel pipe piles in top grip or side grip version, also with gooseneck.
- Telescopic excavator booms (teledippers) which can reach depths of up to 36 m for excavating manholes, shafts and other deep areas.
- Hydraulic rock breakers for pile diameters up to 2 m.
- Hydraulic dredging pumps for excavators are available with a water capacity of up to 620 m<sup>3</sup>/m and up to 70 m delivery head. Together with hydraulic side cutters or cutter heads a wide range of different material can be dredged.
- Hydraulic drum cutters are the ideal tool for cutting concrete or rock if rock breakers or blasting are not applicable or allowed.
- Drill mast attachments are ideal tools for rock bolting, self-drilling anchors and micropiles.





# SOIL IMPROVEMENT

Soil improvement covers a very wide field of different techniques and here we can only show a few examples:

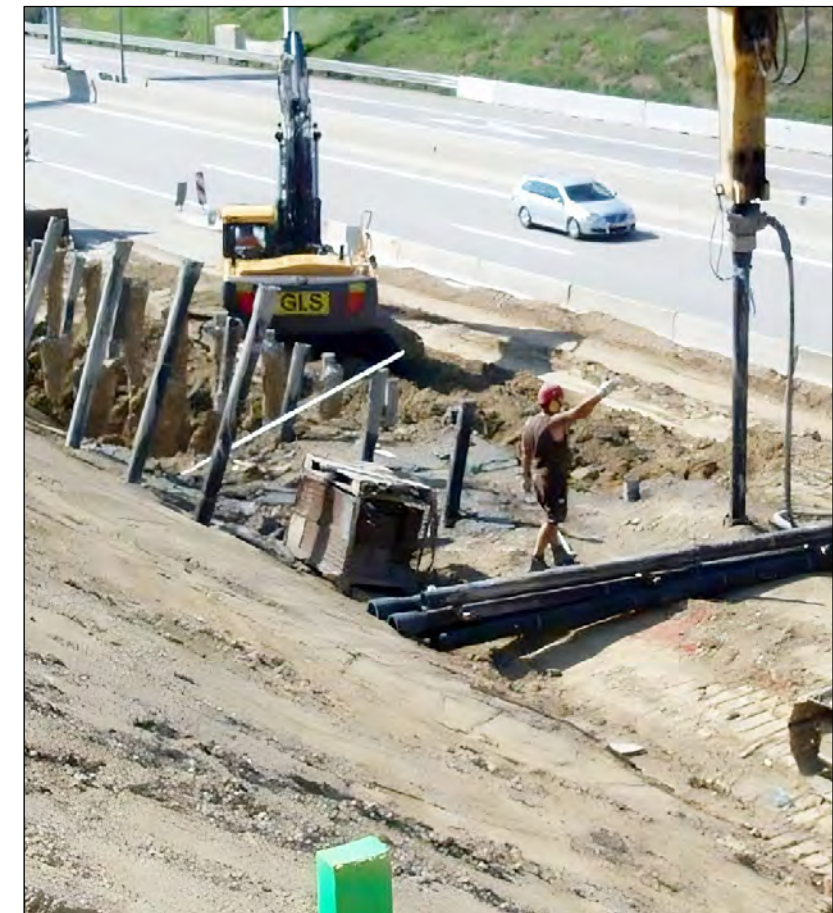
- Stone columns with vibroflots, top or bottom feed, crane or rig mounted
- Wet soil mixing with single, double or triple columns
- Soil compaction using rapid impact compaction with hydraulic hammer
- Dynamic compaction and much more



# DUCTILE IRON PILES

Ductile iron piles are made from cast iron GJS 450-10 in sections of 5.00 or 5.65 m length and driven into the soil by an excavator with a suitable hydraulic hammer. Non-grouted end bearing piles are mainly for projects with a solid stratum while grouted piles are used where skin friction can be activated.

- Ductile iron piles can be driven by standard hydraulic excavators of 25-35 tons operating weight.
- The socket and spigot connection is fast, reliable and does not need any welding.
- The pile length can easily be adjusted to meet different ground conditions and load requirements.
- Low vibration by the hydraulic hammer allows installation of piles close to existing structures.
- Due to high carbon and silicon content ductile iron has higher corrosion resistance than steel.
- Excellent driving performance make these piles a very economical foundation solution for many applications.





# CONSULTING

The actual sale of machines or equipment is only the result of a decision-making process: Evaluating the project and site conditions, defining the structure to be built, observing the time frame, meeting local and international standards, considering technical alternatives and much more. We do this very seriously seeing our work as an 'application consultant' and our customers can rest assured that the offered product is the right one for the job.

Together with Katzkow & Partner in Vienna we are also able to provide detailed design and consultancy service for a wide range of infrastructure and civil engineering projects and some examples are:

- Design of the diaphragm wall for three deep shafts with 42 m diameter and 70 m depth for the Jeddah North sewerage system.
- Design of micropiles foundation system for the Shams 1 solar power plant project in Abu Dhabi.
- Design of the foundations and the temporary dewatering system for a new slip way project in Bahrain.
- Design of a sheet pile shoring system for a three-cell cofferdam in Abu Dhabi.

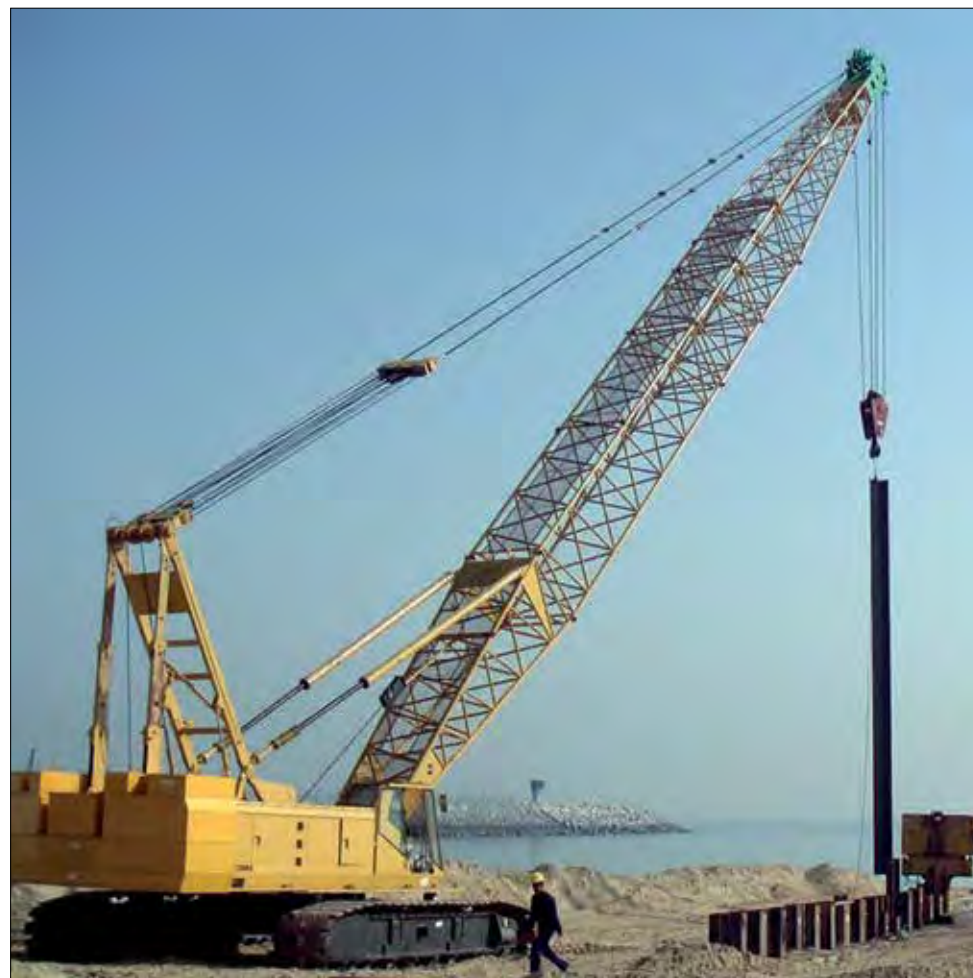




# CRAWLER CRANES

We offer new and used crawler cranes for three main purposes within our business line:

- Cranes with a capacity of 50-80 tons to work with our hydraulic vibrators for driving and extracting sheet piles, H-piles and casings.
- Heavy duty lifting cranes with a capacity up to 300 tons and three winches to support long and heavy conventional piling leaders with up to 70 m length to work mainly with diesel hammers and heavy rotaries.
- High powered foundation cranes with free-fall winches and single line pull capacities up to 30 tons to operate diaphragm wall grabs and cutters.





# CUSTOMERS AROUND THE GLOBE

SINCE 1980

ALGERIA • ARGENTINA • AUSTRIA • AUSTRALIA  
AZERBAIJAN • BAHRAIN • BRUNEI • CHINA  
CYPRUS • ECUADOR • EGYPT • FINLAND  
FRANCE • GEORGIA • GREECE • HONG KONG  
HUNGARY • INDIA • IRAN • IRAQ • ISRAEL  
ITALY • JAPAN • JORDAN • KAZAKHSTAN  
KENYA • KUWAIT • LATVIA • LEBANON  
MALAYSIA • MEXICO • NEW ZEALAND • OMAN  
PAKISTAN • PALESTINE • PANAMA • PHILIPPINES  
QATAR • ROMANIA • RUSSIA • RWANDA  
SAUDI ARABIA • SINGAPORE • SLOVAKIA • SPAIN  
THAILAND • TRINIDAD • TURKEY • UNITED  
ARAB EMIRATES • UNITED KINGDOM • UNITED  
STATES • YEMEN • ANGOLA

IMECO Handelsgesellschaft m.b.H.  
Arbesbachgasse 26/5 | 1190 Vienna | Austria  
+43.1.328 9980 | imeco@imeco.at | imeco.at

